

THE UNIVERSITY OF TEXAS MEDICAL BRANCH (UTMB) AT GALVESTON



Energy Security on a Barrier Island

Presented to
Energy Master Planning for Resilient
Military Installations
December 6, 1017

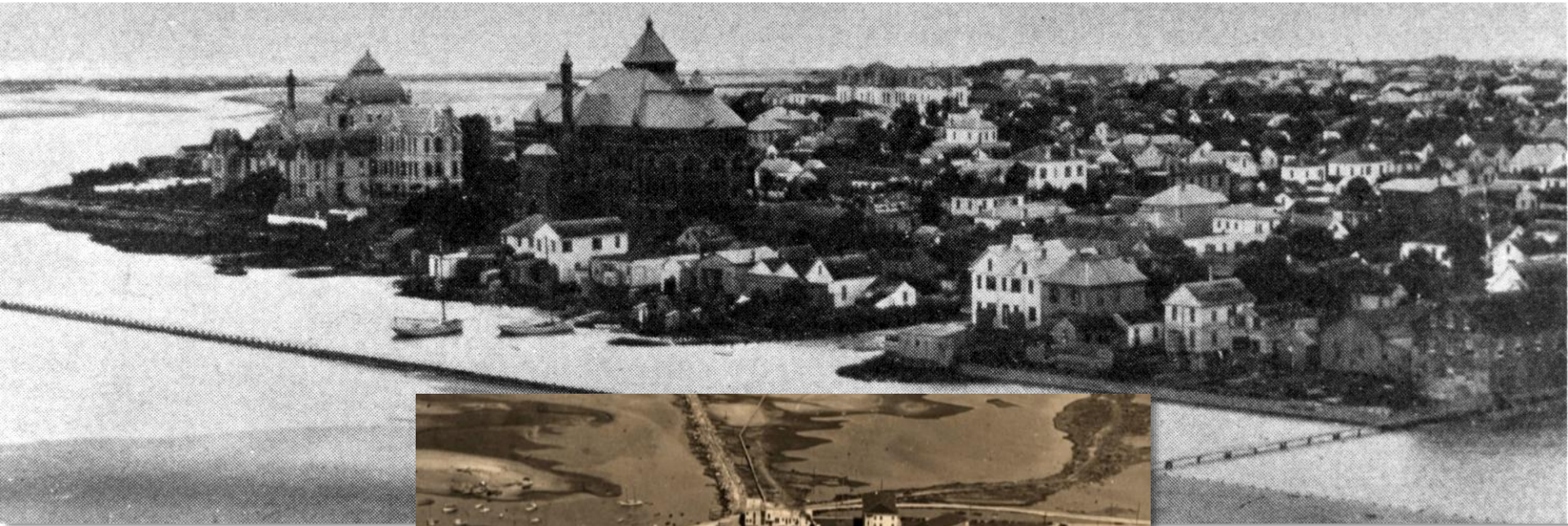
Jerry A. Schuett, PE
Principal, Energy and Utilities
jschuett@aeieng.com

Agenda

- UTMB Galveston circa 1890's
- Hurricane Ike
- A Three Step Solution
- Hurricane Harvey



Galveston Island, circa 1890's



UTMB Photos: Old Red/John Sealy

The Great Storm of 1900



UTMB Photos: Old Red/John Sealy

Hurricane Ike, September 13, 2008

Water/Storm Surge –

Approximately 17 ft to 18 ft
based on the information
gathered to date. NOAA

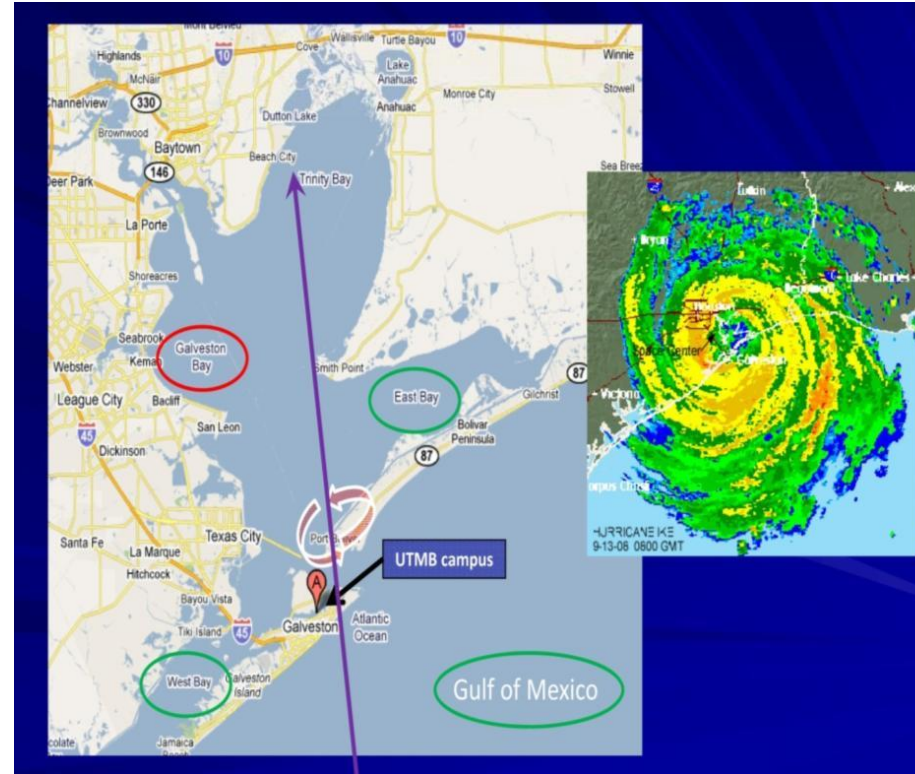


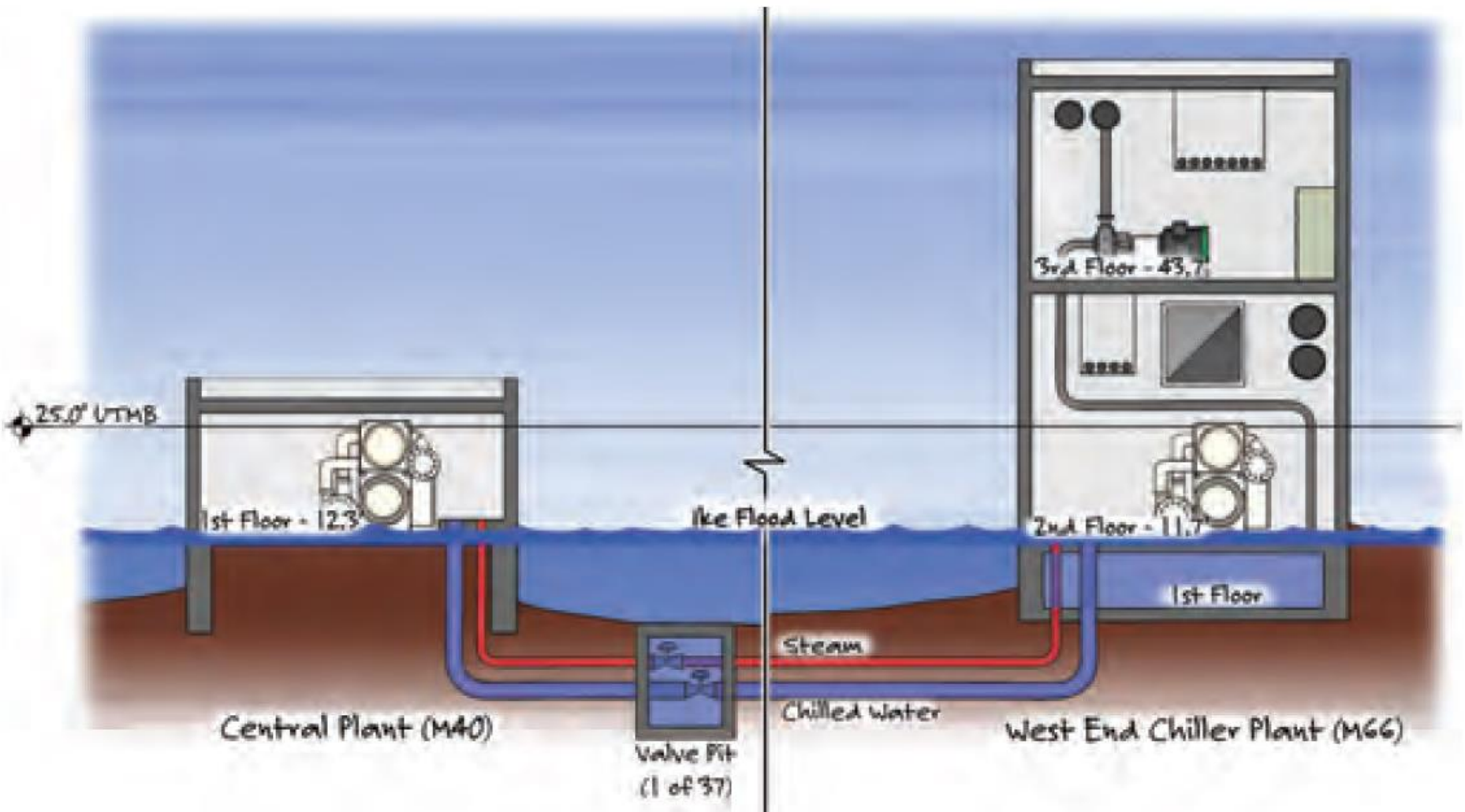
Image courtesy: noaa.gov

Hurricane Ike, September 13, 2008



Image courtesy: noaa.gov

Hurricane Ike, September 13, 2008



Hurricane Ike, September 13, 2008



Impact of Ike

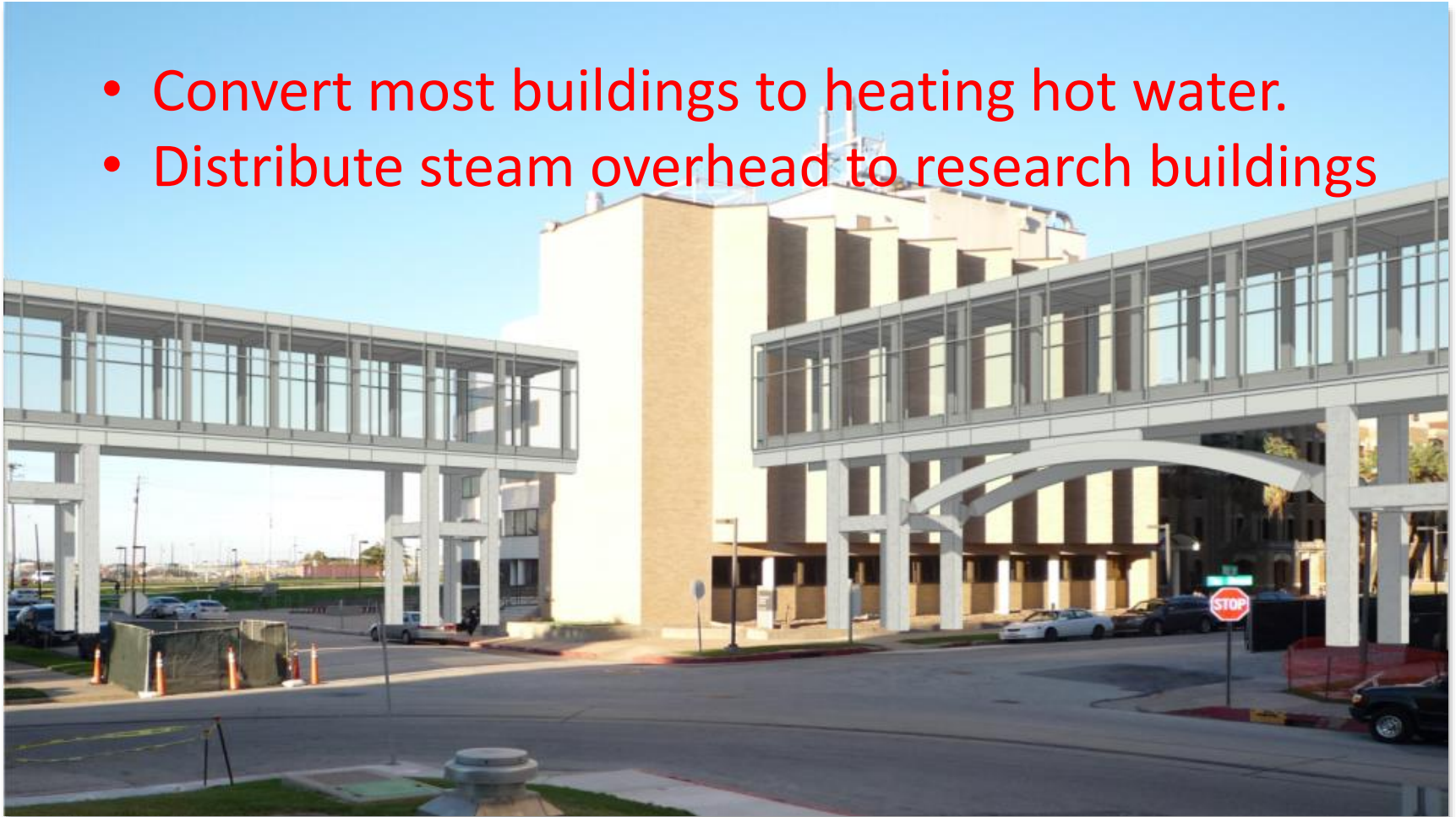
- Cost of stabilization: \$14,000,000
- Unable to operate hospital: 90 Days
- Lost business revenue: \$2,000,000/day
- Cost of evacuation
- Underground steam distribution system a complete loss
- Lost research materials
- Over 1 million sf of campus buildings damaged
- Estimated over 1 billion dollars in damages

A Three Step Solution



Step One Go Away from Buried Steam Pipe

- Convert most buildings to heating hot water.
- Distribute steam overhead to research buildings



Step Two Elevate the Boilers and Chillers



Step Two West Plant Flood Walls



Step Three Produce On-Site Electricity via Combined Heat & Power (CHP)

Combined heat and power systems are approximately 50% more efficient than traditional systems



Hurricane Harvey vs. UTMB Galveston

- Local utility lost two electrical feeders due to a flooded transformer vault, *no problem*
 - The East Plant CHP system operated trouble free in “Island Mode”
- Heavy rainfall caused minor street flooding, *no problem*
 - For the new overhead steam and underground heating hot water distribution systems “It was just another day at the office”.
 - As a precaution, the gates in the new floodwall surrounding the older West Plant were secured.

THE UNIVERSITY OF TEXAS MEDICAL BRANCH (UTMB) AT GALVESTON



Energy Security on a Barrier Island

QUESTIONS

Jerry A. Schuett, PE
Principal, Energy and Utilities
jschuett@aeieng.com